

Sunny-Celeste



TATSUNO
FILLS UP YOUR *Happiness*

Sunny-Celeste

"RELIABLE JAPAN QUALITY DISPENSER"



- 1 World standards structure and performance
- 2 Maintain flow rate at steady state always
- 3 Prevent totalizer cheating
- 4 Encryption data control to prevent cheating
- 5 Setting through keypad
- 6 High pulser resolution
- 7 Large screen and more digit display
- 8 More durable with steel structure
- 9 Convenient with 10-preset buttons

GLOBAL STANDARD COMPONENTS



Gear pump type



4-Piston flow meter



Safety nozzle



High-visibility bright LED backlight on 7-7-5 digits

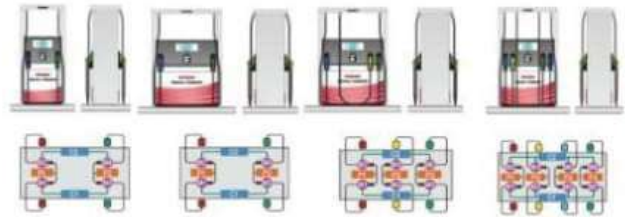


10-Preset buttons

LIST OF FUNCTIONS & MODELS

● Main Feature ▲ Option Feature

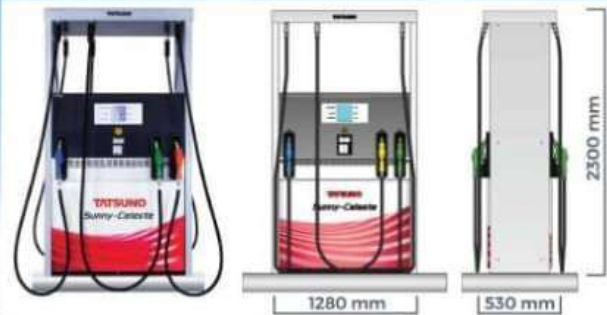
Fueling system diagram



Model/Function	Suction	ZDA24421	ZDB24421	ZDB36621	ZDB48821
	Submersible	ZSA24421	ZSB24421	ZSB36621	ZSB48821
POS interface connect to RS-485		▲	▲	▲	▲
Keypad (preset) without display		●	●	●	●
Interface post	RS-485	▲	▲	▲	▲
	IFSF	▲	▲	▲	▲
Hose length	3 / 4" x 11 FT	●	●	●	●
Hose hanger		▲	▲	▲	▲
Nozzle	Auto-stop nozzle	●	●	●	●
	Just-stop (prepay) nozzle	▲	▲	▲	▲
	Ultra nozzle	▲	▲	▲	▲
	High speed nozzle	▲	▲	▲	▲
	Splash guard	▲	▲	▲	▲
Swivel	Single type (rotation)	●	●	●	●
	Double type (rotation)	▲	▲	▲	▲
Unit price indicator		▲	▲	▲	▲
Vapor recovery		▲	▲	▲	▲
Safety breakaway coupling	Non-reusable	●	●	●	●
	Reusable	▲	▲	▲	▲
Electromagnetic totalizer		●	●	●	●
Sight glass		▲	▲	▲	▲
Emergency-stop button		●	●	●	●
Static electricity discharge pad		▲	▲	▲	▲
Nozzle holder with lock		▲	▲	▲	▲



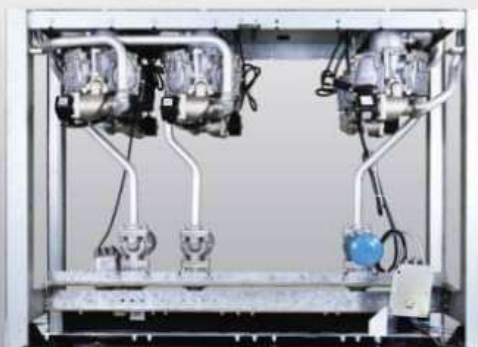
Dimension: Slim Body



Dimension: Wide Body



Suction Type



Submersible Type

Specifications

		Standard speed (Gasoline/Diesel)	High speed (Diesel)
Delivery Speed	Suction	40 L / M (Simultaneous fueling: 35 L / M)	70 L / M (Simultaneous fueling: 40 L / M)
	Submersible	Depends on the on-site submersible pump capacity	
Measuring Accuracy		± 0.25%	
Flow Meter		4-piston type positive displacement meter with electronic calibration system	
Suction Pumping Unit		Internal silent gear pump with air separator, By-pass valve, Strainer and Check valve	
Suction Head (Suction)		4m (Gasoline column)	
Motor		1-phase induction motor, Explosion-proof, 220-240 V, 50 / 60 Hz 560W for standard 750W for high speed	
Counter	Type	Micro-computer type electronic counter (LCD)	
	Character	Black character on a blue field with bright LED back light	
	Display	Amount: 7 digits (0.01 - 99,999.99)	/ Redout: 40H mm
		Volume: 7 digits (0.01 - 99,999.99)	/ Redout: 40H mm
Electronic Totalizer	Unit price: 5 digits (0.01 - 999.99)	/ Redout: 25H mm	
Other Functions		Self-diagnosis, Over voltage protector, Battery back-up	
Preset Keypad		Standard: Volume and amount can be preset using a 16-keypad and 10 programmable one-touch key buttons	
Totalizer	Totalizer	Electronic: 10 digits (99,999,999.99 liters)	
	Daily Electromagnetic	Electronic: 10 digits (99,999,999.99 liters) Mechanical: 7 digits (9,999,999 liters)	
Reset Device		Automatic reset in nozzle hanger	
Nozzle	Standard	Nozzle with color scarf Spout size: 13 / 16" or 15 / 16"	Nozzle with color scarf Spout size: 1"
	Optional	Compatible with other makers	
Swivel		Single swivel 3 / 4"	Single swivel 1"
Hose	Standard	3 / 4" x 11 ft black color	1" x 11 ft black color
	Optional	Color and length by request	
Safety Breakaway coupling		3 / 4" non-reusable	1" non-reusable with short hose
Sight Glass		Optional	By request
Filter (Submersible)	Standard	Paper filter	
	Optional	Reusable metal strainer (washable)	
Housing color	Standard	Same as brochure	
	Optional	Colors by request	
POS interface	Standard	Not provided	
	Optional	RS-485	
Pulser		0.01 L / pulse	
Initial-setting Method		Keypad	
Flow Control Valve		Proportional solenoid valve	
Connection kit for underground piping (Optional)		Suction: Flexible tube, Flange, 1-1 / 2" threaded Submersible: 1-1 / 2" threaded connection pipe for shear valve use	

Note:

The delivery speed of the pump may change due to following conditions;

1. Size and length of hose
2. Size and type of nozzle / swivel
3. Type of oil product, suction conditions, and local piping conditions
4. With / Without presets

** Specifications are subject to change with or without prior notice.



Website: www.tatsuno.co.th
 Line: salesbu
 Facebook: Tatsuno Thailand Co., Ltd.
 Tel: +66 2 532-0987, +66 2 532-7101-4, 061-386-4488, 061-393-8181
 Fax: +66 2 532-0986

TATSUNO (THAILAND) CO., LTD.
 1/8 Mu 3 Ladsawai Lamlukka
 Pathumthani, Thailand 12150